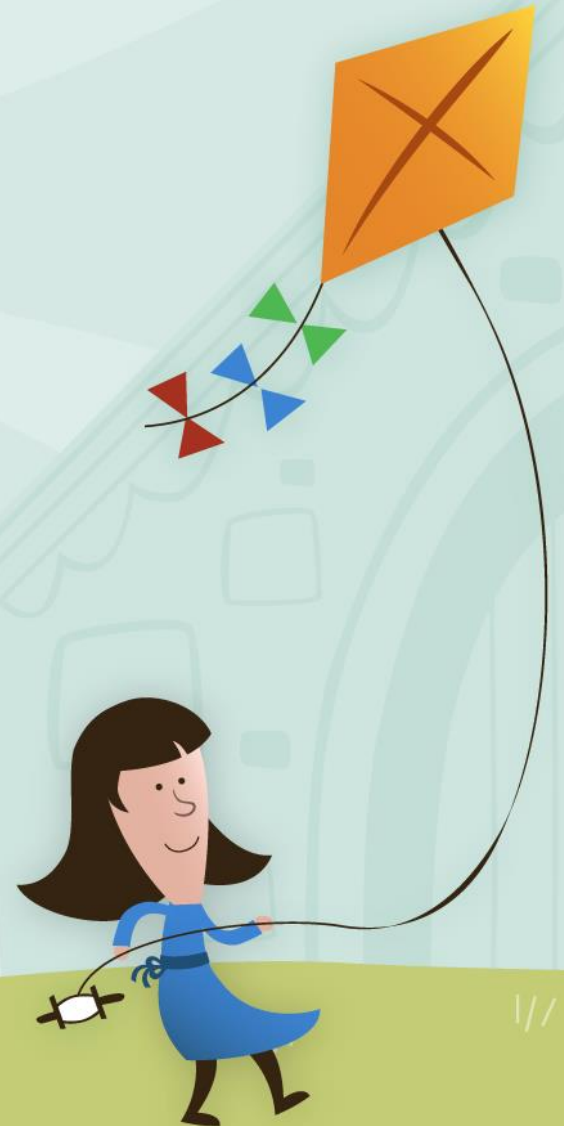


Welcome to Year 4 at Crestwood Park



HOME-SCHOOL AGREEMENT

Smart - Children arrive at school on time wearing the correct uniform.

Polite - Encourage children to follow the school's behaviour policy.

Aware - Help children to succeed by supporting with homework and reading

Respectful - Encouraging children to show respect to **everyone**

Kind - Support children to be caring and make friendships

Safe - Contact school if any issues arise and work with us towards a solution.



Homework — it is also expected that all children read and complete their homework every week. Homework will be given out on Wednesdays to be returned on Mondays.



A cartoon illustration of a girl with long brown hair, wearing a red shirt and blue pants, sitting in a wheelchair. She is holding a tablet computer that displays a red apple. The background is a simple light green wall.

Your Child's Curriculum Journey...

- History and Geography: Anglo Saxons and Vikings. Comparing North and South America. Local area study.
- Science: Electricity, animals including humans, sound. Living things and their habitats, states of matter
- Art: colour theory, shading and tone, tessellation, sewing, collagraph print, clay sculptures
- PE: gymnastics, dance, invasion games, bowling and striking games and net games
- PSHE: Communication skills, the environment, money management, growth and changes
- French: My birthday, my pets, what's in my school bag.

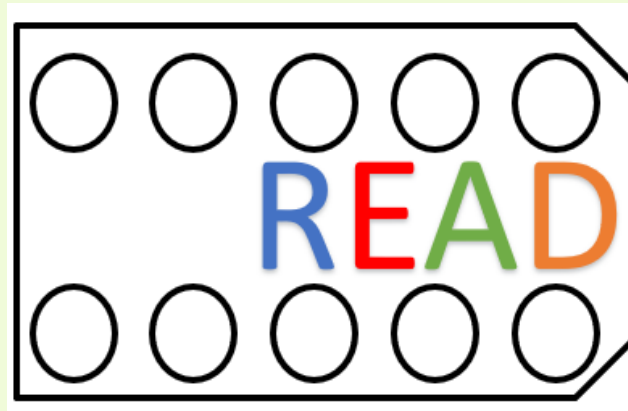


- RE: Judaism, religious festivals, Islam and the Quran, Christianity and love.
- D&T: Structures and packaging, textiles, making a salad.



READING CHALLENGE/COMPETITION!

- When children read a book, they may fill in a circle on their ticket with a sticker.
- If they're reading a longer book, they may fill in one circle for every 100 pages.
- When they complete their ticket card they can choose a reward.



Class Expectations

SPARKS

Looking and listening in lessons

Follow instructions

Do your best



Statutory Tests

Each term children complete a reading and maths assessment.

These will be in line with the year 6 SATs.

In the reading test, children will have a text and a question booklet. As well as a Spelling and a punctuation and grammar test.

In maths, children will complete 1 arithmetic paper and one problem solving test.

All big writes will be assessed using a grid in the back of their curriculum study books.

Star reading assessments every half term and quizzes after completing a book.



General Information

- Names in/ on everything!
- Family Assemblies - Fridays at 9am
- Tuck money online
- Newsletters
- Small cloakroom = Small bags please!
- PE on Tuesday and Wednesday - Named kit in school and long hair tied back
- Forest school on Mondays - Beginning Monday 29th September
- Named water bottle
- No toys from home in case they get lost or broken

